



*Achieving Excellence Together*

# Year 7

## Student Information

September 2020 Start

Booklet Version 3



*Achieving Excellence Together*

*'The school provides pupils with a wide range of opportunities to develop and enjoy artistic, musical and sporting skills. A high proportion of pupils, including the disadvantaged, participate in the extensive extra-curricular activities available.'*

*'Many parents described the highly effective care and support the school provides to their children and families.'*

*Ofsted January 2018*

## Welcome to Barnwell School

Thank you for choosing Barnwell School for your child. We are delighted to welcome you and your family to our school and we aim to make the transition process as smooth and enjoyable as possible.

We are very proud of our reputation for success and pastoral care at Barnwell. We hope that your child will embrace the opportunities on offer, will work hard, contribute to our community and will enjoy life as a Barnwell student.

At Barnwell School, every student is valued as an individual and encouraged to realise their full potential. In addition to academic study, there are many extra-curricular activities on offer and I do hope you will encourage your child to participate in the full range of enrichment available. This is invaluable in providing opportunities for making new friends, developing new skills and building confidence.

Students are successful when home and school work together in partnership and we actively encourage the involvement of all parents and carers and are always happy to welcome new members to our successful Parent Partnership. During your child's time at Barnwell you will find there will be regular meetings with staff to discuss their progress, as well as other opportunities for you to come into school to help celebrate successes.

We look forward to getting to know you and working with you over the coming years to ensure your child leaves Barnwell School fully prepared for all life has to offer them.

Mr M Roberts  
Head of School

Mr A Fitzpatrick  
Head Teacher



## School Structure

Barnwell is a mixed comprehensive school for students aged 11 to 18 years, situated on two campuses, known as Barnwell Middle School and Barnwell Upper School.

Barnwell Middle School Campus is structured around our College system, where each student is a member of one of three Colleges. This 'small school' approach places every child at the heart of a small community of learning.

Our success is built on solid foundations. We aim to become a centre of excellence in developing new courses and achieving outstanding results for all 11-14 year olds, helping students achieve their very best as enthusiastic, respectful and life-long learners

Students are allocated to Colleges, form and teaching groups based primarily on their friendship groups and information from Primary Schools. Students will find out this information on the New Intake Evening.

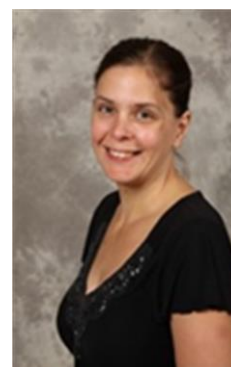
"Inspire a generation" was the main theme from the 2012 Olympic Games in London. Following on from this it was decided that the names of the Colleges should be linked to great British Olympians. Our students were asked to choose from a list of Olympic sportsmen and women; they chose Ennis, Hoy and Redgrave.



**Mrs Brown**  
Head of Ennis College



**Mrs Jones**  
Head of Hoy College



**Ms Cowling**  
Head of Redgrave College





## Uniform



Compulsory items of uniform which must be worn/brought to school every day all year round:

- Blazer
- A College tie
- Standard white shirt
- Black trousers – no ‘skinny’ or denim style
- Skirts will need to be fully pleated and no shorter than just above the knee. They must be made of polyester type material as opposed to Lycra
- Socks – plain, dark colours
- Tights – black or beige
- Black closed shoes only – No sandals, trainers or plimsolls are permitted. Every part of the shoe must be completely black. No stripes, logos, coloured soles or non-black laces are allowed.

### Optional

- Navy blue jumper with the school logo (this can be worn under the blazer)

### Outdoor Coats

Coats need to provide protection to ensure that students are warm, dry and comfortable in all weathers. Any outdoor coat is permitted in school, as long as the general principles of the school uniform are adhered to:

- All coats should be plain black, navy or dark brown without logo or stripes.
- Dark coats with an integral, discrete reflective strip are acceptable
- Students should look business like, smart and their attire should be appropriately formal as befits an educational establishment
- Students are not permitted to wear hooded tops, denim, leather or logoed jackets. They should not bring these items to school

### Hats/Scarves

- In cold weather plain dark coloured hats, scarves or gloves may be worn.
- Students should not wear them in the school buildings (including classrooms)

### Face Masks

Government guidance states that face masks are not a requirement in school settings; however, the school is happy for students to wear a face covering when walking to and from school and during social time providing they are plain coloured reusable or surgical style masks.

## Hair

- Hair style should be appropriate for school.
- No exaggerated cuts or styles and natural colours only.
- Shaved hair no shorter than a No.2 cut is permitted
- Hair bands: Plain and of dark colour. No decorative bands or clips are permitted

## Make-Up

Make-up should be discreet and kept to a minimum. Students will be asked to remove any make up that the school considers excessive. No false eyelashes, nail varnish or false nails permitted.

## Jewellery

- No facial and visible body piercings allowed. Students will be expected to remove their piercings without exception
- It is permissible to wear the following:
- 1 earring in each ear – a small single stud
- 1 watch

## Mobile Phones

The school recognises that students may wish to carry a mobile phone to and from school for their own personal safety.

The school does not encourage students to bring mobile phones into school, but if students choose to do so they must be turned off before entering the school gate and kept in their bag.

Mobile phones must not be used during the school day and may only be turned on at the end of the school day after leaving the school's premises.

## Ordering School Uniform

Uniform can be ordered via the school uniform provider Kids Connection. This easy to use system allows parents and carers the choice of ordering uniform via the telephone 01992 587466, online at [www.kidsconnection.co.uk](http://www.kidsconnection.co.uk) or visiting the shop at Unit 1A Great Northern Works, Hartham Lane, Hertford, SG14 1QW

Items can be delivered direct to your home or (**dependent on school opening\***) collected from Barnwell School. Please see their website for further information.

If you would like to try uniform on and purchase 'over the counter' we are hoping to host a Pop-Up Shop at school (**dependent on school opening\***).



**kids connection**  
uniforms, shoes & accessories

## PE Kit

For PE you should have a complete change of clothing and may wish to bring a towel for showering

### Girls and Boys PE Kit:

- PE shirt (universal style) - Compulsory
- Shorts - Compulsory
- Skorts - Optional for Girls
- PE Socks - Compulsory
- Universal Jogging Bottoms or Sport Leggings - Optional \*
- Hoodie – Optional\*
- Suitable sporting trainers with laces - Compulsory
- Football Boots (Girls and Boys) - Compulsory

*\* Optional. If students want these, they can only be purchased from the school, no other alternatives may be worn.*

*No additional items can be worn.*

*The School will not be held responsible for any loss or damage to any personal items brought into school.*

## Equipment

All students must have the following equipment:

Clear Pencil Case	Ruler 15cm
Black, blue and green writing pens	Set Square
Pencils	Protractor
Scientific Calculator	Compass
Eraser	Sharpener

In addition to these items it would be beneficial for you to have the following:

- Pocket Dictionary
- Thesaurus
- Highlighter Pens
- Glue Stick
- A Water bottle large enough to last the whole day.
- Hand Sanitiser
- A few plasters for students own personal use if needed.



## Times of the School Day

For September 2020, our school day has staggered timings for different year groups to avoid crossover between bubbles the table below shows these revised timings for Year 7 Students. Timings for other year groups are different.

8.35am – 8.45am	Tutor Time
8.45am – 9:45am	Period 1
9:45am – 10.00am	Break
10.00am – 10.50 am	Period 2
10.50am – 11.40am	Period 3
11.40am – 12:10pm	Lunch
12.10pm – 1.00pm	Period 4
1.00pm – 1:50pm	Period 5
1:50pm – 2:40pm	Period 6
2:40pm – 3.00pm	Period 7 Limited extra-curricular activities will be available in September, we hope to expand this once things settle

## Attendance

Barnwell promotes good school attendance and punctuality for every child. Regular and punctual attendance at school is both a legal requirement and essential for students to maximise their educational opportunities. School attendance is also a component of safeguarding children.

Barnwell aims to ensure students attend school and will work consistently towards a goal of 100% attendance, as regular and punctual attendance is of paramount importance in ensuring that all students have full access to the curriculum. Valuable learning time is lost when students are absent or late. Students should be at school, on time, every day the school is open, unless the reason for the absence is unavoidable.



*Pupils take advantage of the many opportunities to develop leadership skills, which prepare them well for their future adult lives.*

*Ofsted 2018*





## Comments from Year 7 Students and their Parents

Great teaching team

Really impressed with the  
variety of after school  
clubs

We have been very  
impressed with the  
transition process.

The curriculum is more  
challenging

Show My Homework is  
cool

We were very impressed  
with the school from our  
first visit.

Communications are very  
good

The enthusiasm of staff is  
always high

The teachers really help  
you to get involved in the  
lessons

All of the older children  
have helped me find my  
way around the school

I love the school uniform,  
it is comfortable to wear

We have more chance to  
take part in different  
activities in the school

Students are polite

I like the responsibility  
and the challenge

## Medical Appointments

Orthodontists and other medical professionals should be able to accommodate appointments outside school hours. Please aim for either early morning or late afternoon appointments. This will ensure that your child is able to complete at least a part of their school day and it minimises the impact of their absence on their attainment.

Please inform the school by emailing [absence@barnwell.herts.sch.uk](mailto:absence@barnwell.herts.sch.uk) or leaving a telephone message on the Absence Line (01438 730876). Where applicable, please provide us with a copy of the medical card or letter regarding your child's medical appointment.

## Holidays

We recognise that it is more expensive to take a holiday during school breaks and that is why many parents request term-time Leave of Absence for their child. It is important, however, that parents fully consider the implications of taking their child out of school on their child's education. If an absence is not authorised we may issue a Penalty Notice or begin legal proceedings.

### 'Authorised Absence' is likely to constitute:

- Illness
- Emergency dental/medical appointment
- Day of religious observance
- Family bereavement
- Attending an interview for employment, school, university, etc.

Except in the case of illness, absence permission must be sought well in advance of the intended date(s). In the case of absence owing to chronic/recurring illness, you will be asked to provide a medical certificate.

*At Barnwell School, good attendance is rewarded for individual students, which provides points for your College.*



## Behaviour

### Basic Expectations for Student Behaviour:

- Show self-control and common sense
- Are respectful and helpful
- Are on time for school and lessons
- Complete learning tasks in lesson within the given time frame
- Complete homework on time
- Follow instructions first time
- Follow classroom expectations
- Take pride in themselves, their work and their environment
- Help keep the buildings and surrounding areas neat and tidy so the school is an attractive and environmentally friendly place
- use the litter bins

*Our school community expects all students to take responsibility for their own behaviour.*

*Our school community believes that everyone can achieve excellence by working together.*

## Lunch Arrangements

### Biometrics – Cashless Catering

Our catering system will eliminate the need to carry a card or cash within the school. A parent or carer will be able to credit money to their child's catering account enabling them to purchase their meal through biometric recognition. Your child's account will then be debited with the value of the meal.

### Free School Meals

If you are entitled to free school meals the value per day will be credited onto your child's biometric account. This can be spent during the lunch period only. Additional credit can be added to the account and can be used to purchase additional items not included in the free school meals allowance, or to buy items at break time.



*The behaviour of pupils is good. In and out of lessons, pupils' conduct is calm, orderly and mature.*

*Pupils and parents are positive about the teaching in the school.*

*They described how teachers are committed to the progress of pupils and how they 'go above and beyond' to support them.*

*Ofsted 2018*





*Pupils take pride in their school, in their work and in themselves.*

*They respect their environment.*

*There is no litter or graffiti in the school.*

*Pupils wear their smart uniform with pride, without reminders from staff.*

*Their books are well organised and well presented.*

*Ofsted 2018*



## PRIDE

Barnwell School prides itself on providing all students with the opportunity to achieve personal academic success.

We have recognised that students who realise and surpass their individual academic targets have some key character traits that have facilitated their outstanding learning journey. These traits all revolve around the acronym **PRIDE**.

We therefore have a culture and expectation that all Barnwell students are given the opportunity to be **P**assionate, **R**esilient, **I**nnovative, **D**etermined and **E**mpathetic learners - **PRIDE**.

Students are given regular guidance on how to show **PRIDE** in their learning leading to them exhibiting a positive attitude to learning where they are highly motivated. Students are responsible for their learning and encouraged to work beyond the limits of their ability, behaving in a manner that ensures that outstanding progress takes place.

**PRIDE** stands for:

### **Passionate**

Having a drive and thirst for learning which is relentless throughout your learning journey

### **Resilient**

Having the ability to recover quickly and overcome difficult tasks and situations

### **Innovative**

Having the courage to think creatively when looking for new methods to lead you to success

### **Determined**

Having an unwavering desire to succeed regardless of the barriers

### **Empathetic**

Having the ability to understand the feelings and circumstances of others

## Instrumental and Vocal Tuition

Barnwell School offers a range of instrumental and vocal lessons for students. These take place during lesson time but on a rota so that students do not miss the same lesson each week. Instrumental and vocal lessons available are:

Voice/Singing	Violin
Guitar	Flute
Piano/Keyboard	Drums
Saxophone	Tenor Horn
Clarinet	Trumpet

There will be application forms available on New Intake Evening. If you require any further information, please contact Mr E Brown, Head of Music:  
[e.brown@barnwell.herts.sch.uk](mailto:e.brown@barnwell.herts.sch.uk)

## Show My Homework

*“Show My Homework is an award-winning virtual homework solution that enables schools to easily and effectively track and monitor homework.”*

[www.showmyhomework.co.uk](http://www.showmyhomework.co.uk)

As a school we use Show My Homework to publish all of the homework we set. Students and parents are all given an individual login that allows both parties to see the precise homework that is set and the date that this work is due. This means that there is no need for students to rush to record homework in lessons, that additional and more in-depth information, hyperlinks and other support materials can be shared with students and that parents can easily track the homework that has been set.

## Period 7 / Homework Club

This is subject to staffing availability, exact arrangements will be published as soon as this provision is mapped.

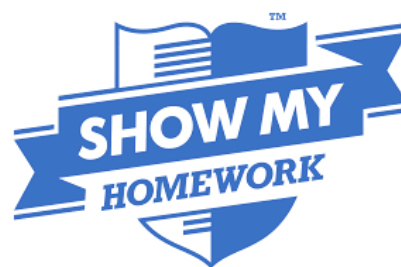
Each evening from the end of the school day through to 3.00pm, we have dedicated member of staff manning one of IT rooms allowing students to work on homework tasks or complete projects on or off computers.



*Leaders of the school have transformed pupils' attitudes towards learning.*

*Relationships between pupils and adults are respectful and warm. Pupils are polite and friendly to visitors.*

Ofsted 2018







## Medical

If your child is ill, they must go to the First Aider who will contact home. Students are not to contact parents directly.

If students have a medical condition or needs, please make sure you enter the information into the appropriate box on the Student Details form. We will then send you a Medical Form to complete with the opportunity to elaborate further.

*Our qualified First Aiders are **not** nurses.*



## Hygiene

Barnwell School does not allow spray anti-perspirants or deodorants. You are advised to bring roll-on deodorants for after PE.

## IT

All students will be given their own account on our school network. This gives them their own storage space for their work, online access to Microsoft Office 365, internet access and the ability to print within school. Parents and students will need to read and sign the IT Acceptable Use Agreement prior to students using our network.

All computer usage in school is closely monitored, we use software to restrict internet access and to detect any inappropriate behaviour on our network.

*Pupils said that they feel safe in school and are taught how to keep themselves safe.*

*Ofsted 2018*

## Lockers

Students can rent a locker in which to keep their belongings. These are usually organised during the second full week by Reception staff.

Students pay a £10 (non-refundable) charge for the locker. This covers them throughout Middle and Upper School.

Lost locker keys can be replaced, but there will be a nominal fee.





## Breakfast Club

Breakfast Club is open from 8.00am every morning and offers students a free breakfast to start their day.

## Bicycles

We provide secure cycle areas that are locked during the school day. If students cycle or scooter into school, we would encourage them to wear suitable protective equipment and ride safely. Students need to ensure their item is securely locked as we are unable to take responsibility for any loss or damage.

## Extra-Curricular Activities

Clubs and activities are subject to staffing availability and significantly affected by the staggered times of the school day and by the requirement to separate year group bubbles. We hope to re-commence activities as soon as possible, but please bear with us during this difficult time.

## Lost Property

***Please ensure all uniform and equipment is clearly named.***

Any 'lost' property found that is named will be returned via Form Tutors. All other lost property will be kept in a secure area for two weeks before it is recycled or disposed of.

## Photographs/Video

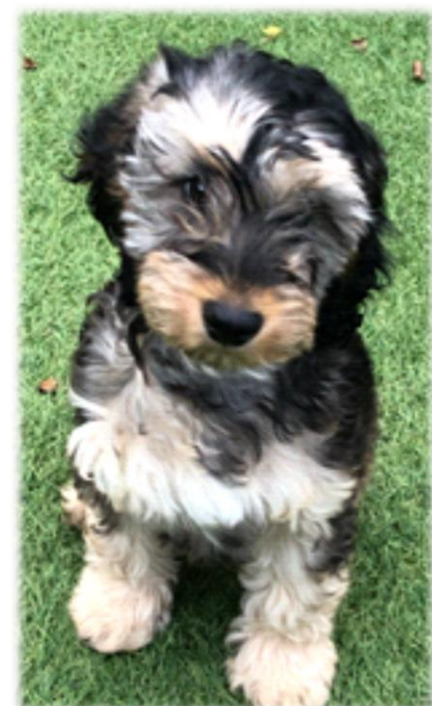
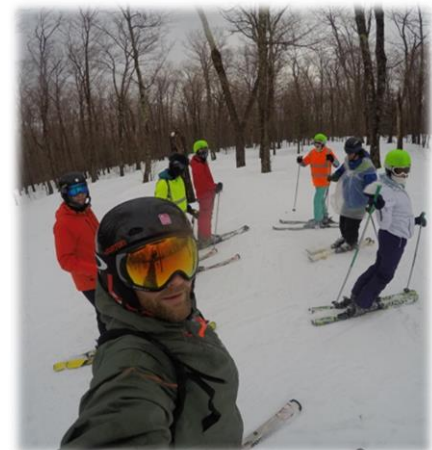
Occasionally the school will take photographs or video. These will be used for displays, teaching and learning, school publications, our website Barnwell YouTube and Barnwell associated social media. At all times, the safeguarding of our students is paramount.

## Lacey

We would like to introduce you to our school dog, Lacey. She is a 5-month old Cockapoo, who currently is undertaking her training to become a Hertfordshire Taking the Lead Therapy Dog.

Lacey is a family pet, she is fully vaccinated, regularly groomed, insured, and has annual Vet checks.

Lacey is hypoallergenic as she does not shed her fur.



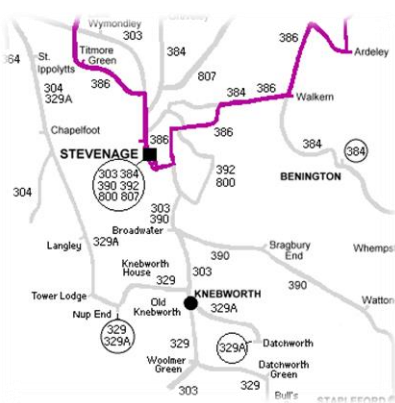
## Schoolgateway



*The safeguarding culture at Barnwell School is well developed and underpins all that staff do.*

*Consequently, pupils are well looked after and feel safe.*

### Ofsted 2018



## Communication

Barnwell School's preferred method of communication is via the School Gateway into Schoolcomms. This is a service that allows you to receive email and text messages. This system also allows you to easily pay for trips, dinner money, events and other items without the possibility of loss or delay.

If you wish to make payments via the Schoolgateway, you will need to register with your mobile phone number and email address that you have provided to the school. If you have a smartphone we recommend that you download the Schoolgateway app which allows free text message communication between you and the school.

Please remember to keep the school up to date with your contact details.

## Website

Our website is a comprehensive portal into Barnwell. It is updated regularly and provides news and information for parents, carers and students.

[www.barnwellschool.co.uk](http://www.barnwellschool.co.uk)

## Transport

Herts County Council will write to you if your child has a statutory entitlement to school transport. If you do not hear from Herts County Council by the end of July 2018, please contact the Customer Service Centre and ask to speak to an Admissions and Transport Officer on 0300 123 4043. **(This service may be restricted during the current situation.)**

If you are not eligible for free transport your options are as follows:

1. Check the Bus and Coach Route information.
2. Visit [www.intalink.org.uk](http://www.intalink.org.uk), to find out if your child could use a public bus route(s) to travel to school
3. Apply for a SaverCard; this will enable your child to get discounted travel on public buses in Hertfordshire.
4. If available, pay for a seat on a vehicle run by the County Council.





Achieving Excellence Together

Barnwell Middle School  
Shephall Green  
Stevenage  
Hertfordshire  
SG2 9XT

### Adventure Weekend

Postponed, but...

We are hoping to be able to run this in the summer term or at a later stage for this year group.

### \* September

School starts, for our new Year 7 on Thursday, 3rd September at 8:30am. Make sure you are all prepared with your uniform and equipment.

### \* Summer School

Open to our Pupil Premium Students, our week long Summer School runs in the first week of the school summer holidays. Eligible students will receive a letter with further information.

### \* New Intake Day

Thursday, 9th July, 8:30am in our Middle School Hall. No uniform required, but please do need to take part in some PE. A packed lunch. Arrived by 2:45pm

### \* New Intake Evening

Monday, 6th July - This will be an excellent chance for you to come into Barnwell Middle School, to meet the staff within your College Team.

sort of...

### \* Covid-19

Events and activities are reliant on schools being open and updates to government guidance in terms of social distancing and isolation.

### \* Ones Club

Open to those students joining us in a small group. This is a weekly opportunity to meet other students and staff and to take part in some fun activities.

### Have a read of the Information Booklet

The Information booklet contains all the information you need to know about joining Barnwell School and serves as a reference for future use.

### \* We will be visiting you at your school

Mr Reavell, Mr Roberts, Mr Patching and the rest of the staff will be visiting your schools to meet you in person, to have a chat with you.

Achieving Excellence Together

Telephone: 01438 222500 Fax: 01438 222501 Email: communication@barnwell.herts.sch.uk Website: www.barnwellschool.co.uk  
Headteacher: Mr A. Fitzpatrick

## \* Covid-19

At the time of print and inline with government guidance, our school is currently closed. With the uncertainty this brings, and without knowing any timescale for re-opening, please accept that some of the planned events and activities that would normally take place as part of our transition programme, may not be able to happen. Please rest assured that we will do our utmost to ensure the smoothest possible transition for all students coming to join us in September, but exact details of this may have to change in response to the current situation. Some of the information in this booklet may therefore need to be amended to reflect developments.

Yep! It certainly is affecting things...



*Achieving Excellence Together*

Barnwell Middle School  
Shephall Green  
Stevenage  
Herts  
SG2 9XT

Telephone: 01438 222500 Email: [communication@barnwell.herts.sch.uk](mailto:communication@barnwell.herts.sch.uk)

Website: [www.barnwellschool.co.uk](http://www.barnwellschool.co.uk)

Head Teacher: Mr A Fitzpatrick

Head of School: Mr M Roberts

Barnwell School 2020

***Achieving Excellence Together***