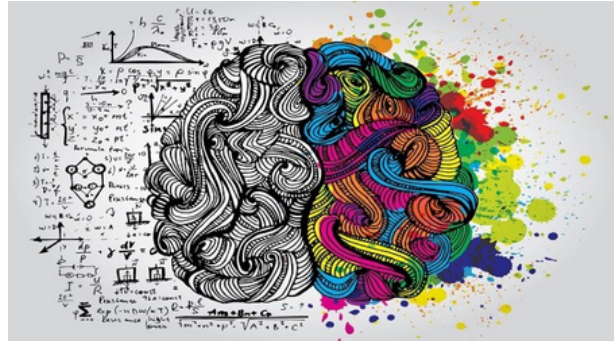


---

# Psychology

## OCR A Level in Psychology



### Course Description

Psychology is the scientific study of behaviour and the mind. It offers a unique educational experience that develops a distinctive and broad set of skills. It's located in scientific method and allows scope for extensive evaluation from a range of perspectives.

The specification provides students with the exciting opportunity to gain a deeper understanding of psychology. They will have the opportunity to develop a wide-ranging set of key skills, including being able to communicate effectively using appropriate language, to interpret and critically assess scientific data, and to research and critically evaluate a range of sources. The acquisition of such a diverse range of skills will be of great benefit in further education, the workplace and society in general.

The course is made up of 3 assessments:

- Component 1 — Research Methods
- Component 2 — Psychological Themes
- Component 3 — Applied Psychology

### Methods of Assessment

3 exams at the end of the second year

- Research Methods (01) – 90 marks, written paper, 2 hours, 30% of total A level
- Psychological Themes through core studies (02) – 105 marks, written paper, 2 hours, 35% of total A level
- Applied Psychology (03) – 105 marks, written paper, 2 hours, 35% of total A level

---

## Progression

Throughout the course of study, learners are encouraged to develop an awareness of the role of psychology in society and its applications to many situations. The qualification is suitable for learners intending to pursue any career in which an understanding of human behaviour is needed. It is also suitable for further study in social sciences or as part of a course of general education.

There is an emphasis on research skills and enquiry in order to enable the learner to progress into higher levels of education. The specification therefore provides a suitable foundation for the study of psychology and/or related courses in Higher Education.

## Student Testimonial - Amy



I'm drawn to psychology because it offers insights into the human experience. It's fascinating to explore the complexities of the mind and behaviour, from understanding cognitive processes to unravelling the complexities of mental health. Psychology provides practical tools to improve lives, whether by helping individuals overcome challenges or by enhancing well-being. I'm eager to apply psychological principles to real-world problems, fostering empathy and promoting positive change. The ability to understand and connect with others on a deeper level makes psychology not just a field of study, but a pathway to making a meaningful difference.

## Class of 2024-25

 **SIXTH FORM**  
**Where are they now?**  
  
Miruna A.  
University of Bedfordshire  
Psychology

 **SIXTH FORM**  
**Where are they now?**  
  
Cameron B.  
Loughborough University  
Psychology

 **SIXTH FORM**  
**Where are they now?**  
  
Natalie W.  
Loughborough University  
Criminology

 **SIXTH FORM**  
**Where are they now?**  
  
Nathan O.  
Anglia Ruskin University  
Psychology

 **SIXTH FORM**  
**Where are they now?**  
  
Aimee B.  
University of Hertfordshire  
Psychology

 **SIXTH FORM**  
**Where are they now?**  
  
Kimberley I.  
Nottingham Trent University  
Law with Psychology